



# THE APARTMENTS AT HIGHLAND GREEN

Luxury Independent Living







**HG**  
HIGHLAND GREEN™

## The Apartments at Highland Green

Highland Green's comprehensive development plan includes both Independent Living apartment-style residences as well as Assisted Care and Memory Care apartments and services...the best of all worlds, in which residents may continue to enjoy a vibrant lifestyle full of social, cultural and educational opportunities; surrounded by a natural beauty unique to Highland Green's expansive, picturesque campus; along with the peace of mind that you have a plan in place should the need for a helping hand ever arise.

Building on 39 years of experience and successful track record of our sister community, OceanView at Falmouth, the Independent Living apartment project will include 43 Independent Living homes.

- Ranging in size from 1,138 SF - 2,232 SF
- Two-bedrooms, or one bedroom and den
- Single-floor living, all corner units
- Balcony or patio
- High ceilings and expansive windows
- Wood floors and sunny rooms
- Views of the nearby woodlands
- Covered underground parking & surface parking
- Chef Prepared Dining Options
- Wellness Program
- Fitness Center
- Housekeeping
- 24-hour emergency call service
- Transportation to appointments/excursions
- Priority access to the Highland Green Assisted Care community.







# The Apartments at Highland Green



**Activities and programs will take place in the Community Room; and, for added comfort and convenience, the three Independent Living buildings will be connected via vestibules.**

- Activities, clubs, excursions
- Speakers and life long learning
- Wellness activities
- 230-acre Cathance River Nature Preserve
- Full access to the Community Room in building
- Transportation to fun excursions and appointments



## Financial Information:

- The apartments are a co-op purchase where owners gain equity and appreciation.
- A deposit of \$2,500 is required to join the priority wait list.
- Reservation Agreement is \$50,000.
- Prices for apartments begin at \$995,000.
- HOA fees are estimated between \$2,500 - \$3,000.
- \$1,000 additional for second person.
- Financing is available through our partners at Bath Savings.
- \* Prices and fees subject to Change.



Living Room Rendering

### Included:

All operational expenses of the community as well as certain supportive services are included in home purchase. Operational expenses include management, water, sewer, insurance, interior and exterior maintenance of buildings, reserved parking, snow removal, groundskeeping, landscaping and trash collection. Supportive services include: Wellness Program and access to registered nurse, health care management, 24-hour emergency call service, housekeeping service, van transportation options, and priority access to Highland Green assisted care community.

### Not Included:

Each resident or unit is responsible for: telephone, cable TV and internet services, property taxes (assessed by the Town of Topsham) and optional dining services. \* Subject to change.



## RENDERINGS - APARTMENT & ASSISTED LIVING BUILDINGS

Assisted Care  
& Memory Care  
Building

Building  
#2

Building  
#1

Building  
#3



Assisted Care  
& Memory Care  
Building

Building  
#1

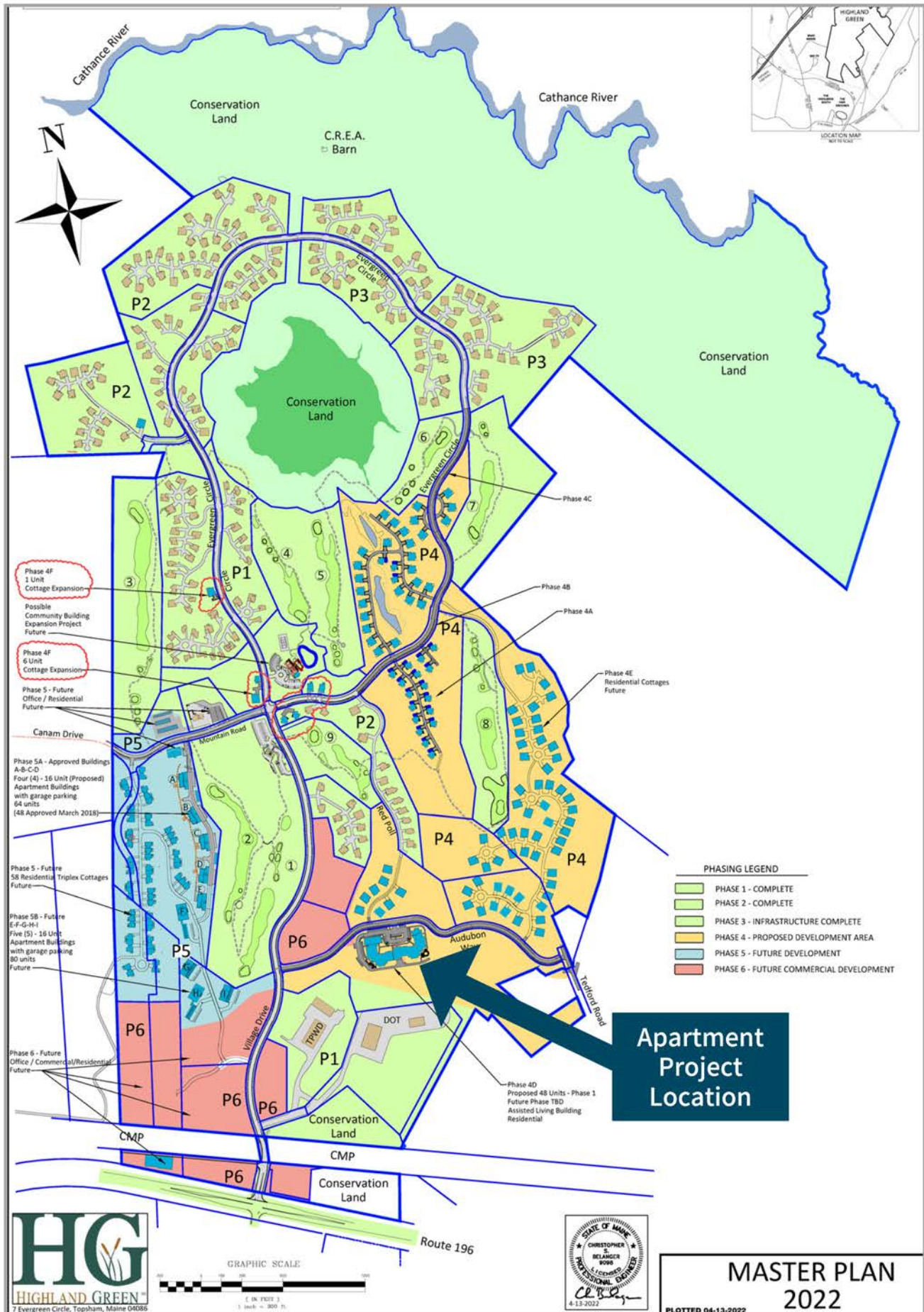
Building  
#2

Building  
#3



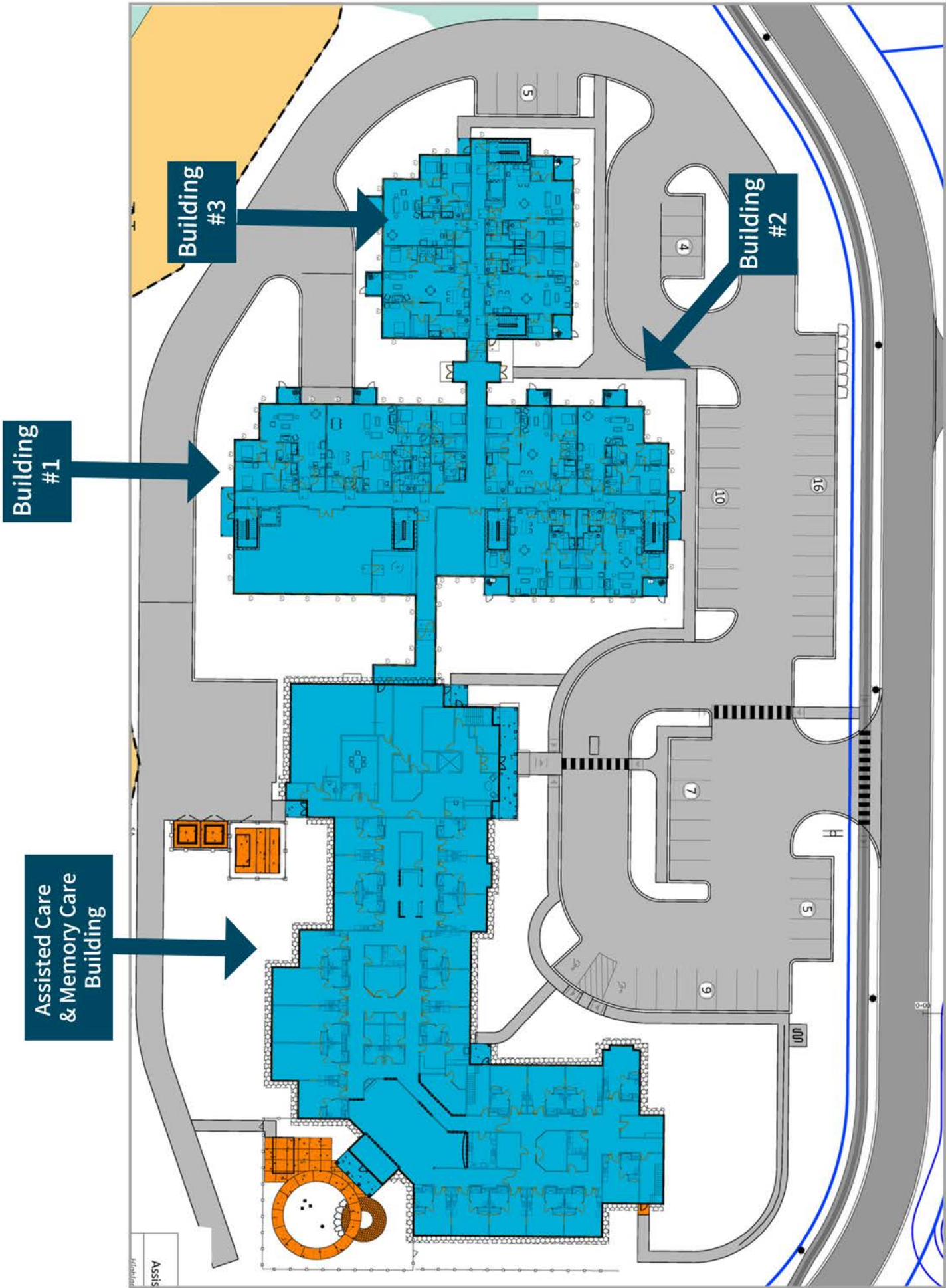


# HIGHLAND GREEN MASTER PLAN





SITE MAP - APARTMENT & ASSISTED CARE BUILDINGS



## APARTMENT RENDERINGS - INTERIOR



Living Room



Kitchen



## APRTMENT RENDERINGS - INTERIOR



Bedroom

## APARTMENT RENDERING - COMMUNITY ROOM



Dining & Community Room

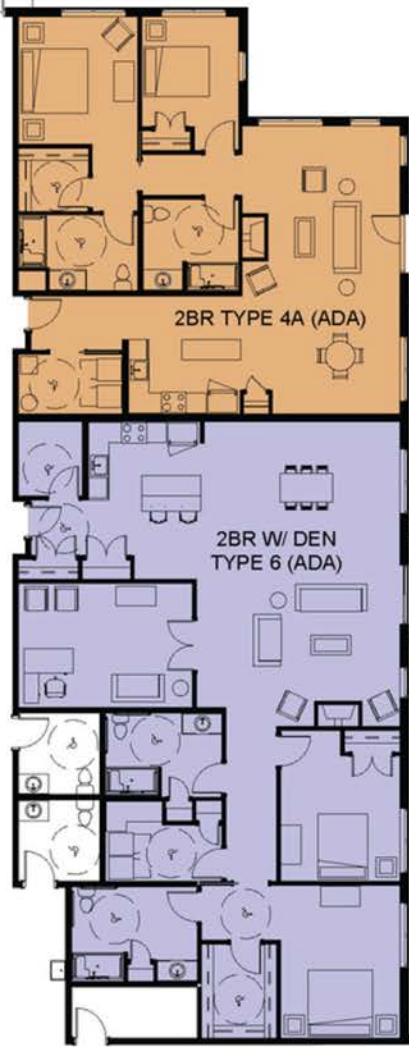


# 1ST FLOOR

**Building #1**



To Assisted Care Building



**Unit #1101**  
Floor Plan #4A  
(ADA)  
1,345 SF

**Unit #1102**  
Floor Plan #6  
(ADA)  
2,049 SF

**Building #2**



**Unit #2104**  
Floor Plan #3  
1,243 SF

**Unit #2103**  
Floor Plan #1  
1,154 SF



**Unit #2101**  
Floor Plan #5  
1,527 SF

**Unit #2102**  
Floor Plan #4  
1,347 SF

To Building #3  
(Future)





# 2ND FLOOR

## Building #1

**Unit #1204**  
Floor Plan #1  
1,154 SF

**Unit #1203**  
Floor Plan #3  
1,243 SF

**Unit #1201**  
Floor Plan #4  
1,347 SF

**Unit #1202**  
Floor Plan #5  
1,527 SF

To Assisted Care Building

To Building #3 (Future)

## Building #2

**Unit #2204**  
Floor Plan #3  
1,243 SF

**Unit #2203**  
Floor Plan #1  
1,154 SF

**Unit #2201**  
Floor Plan #5  
1,527 SF

**Unit #2202**  
Floor Plan #4  
1,347 SF





# 3RD FLOOR

Building #1

Unit #1304  
Floor Plan #8  
1,138 SF

Unit #1303  
Floor Plan #7  
1,227 SF

Unit #1301  
Floor Plan #4  
1,347 SF

Unit #1302  
Floor Plan #5  
1,527 SF

To Assisted Care Building

Building #2

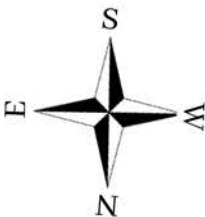
Unit #2304  
Floor Plan #7  
1,227 SF

Unit #2303  
Floor Plan #8  
1,138 SF

Unit #2301  
Floor Plan #5  
1,527 SF

Unit #2302  
Floor Plan #4  
1,347 SF

To Building #3  
(Future)





# 4TH FLOOR

Building  
#1

Unit #1402  
Floor Plan #11  
1,957 SF

Unit #1401  
Floor Plan #10  
2,232 SF

2BR W/ DEN TYPE 11

2BR W/ DEN TYPE 10

To Assisted Care  
Building

Building  
#2

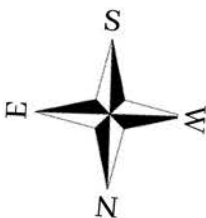
Unit #2402  
Floor Plan #11  
1,957 SF

Unit #2401  
Floor Plan #10  
2,232 SF

2BR W/ DEN TYPE 11

2BR W/ DEN TYPE 10

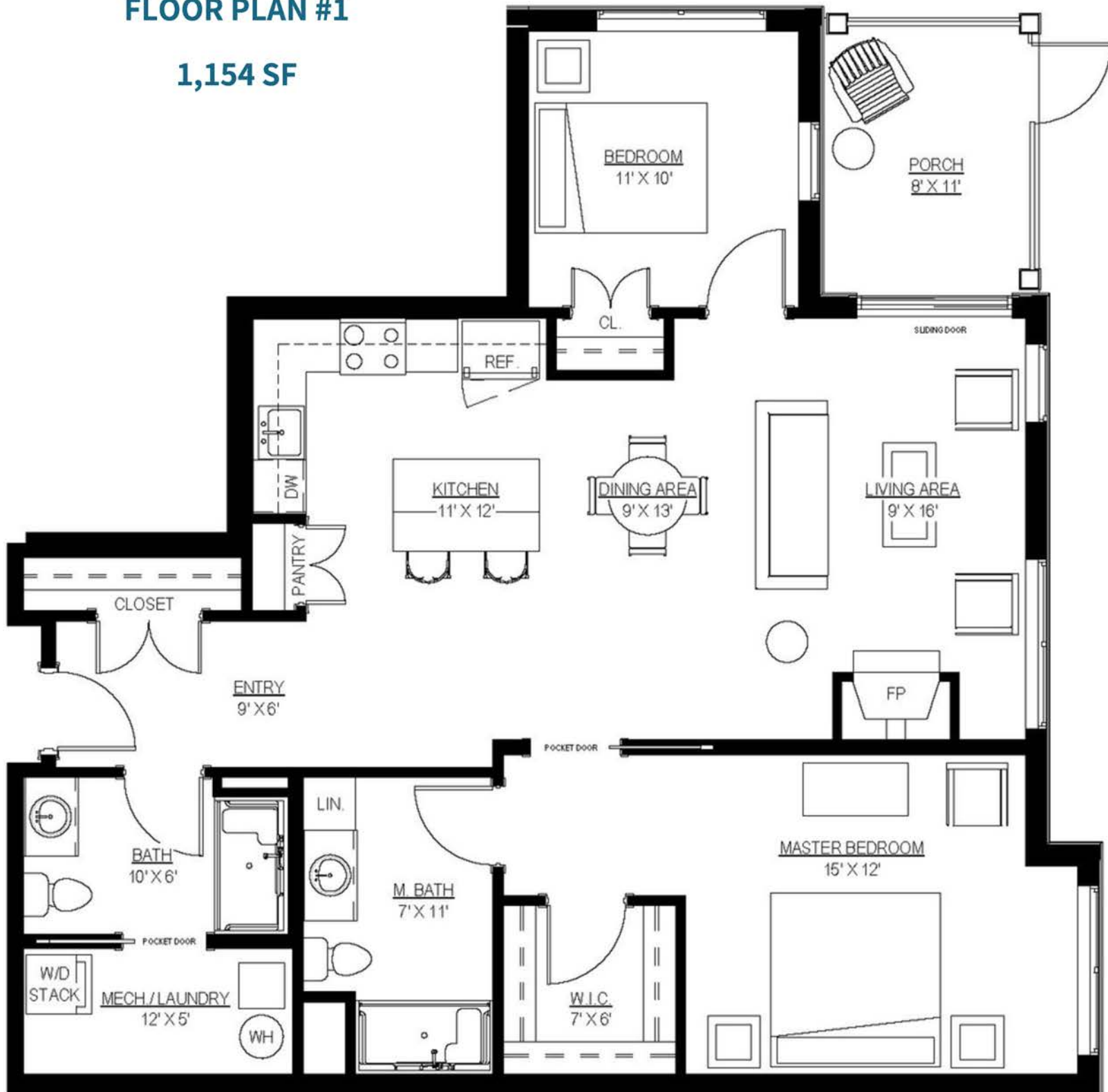
To Building #3  
(Future)





# APARTMENT FLOOR PLAN #1

1,154 SF





# APARTMENT FLOOR PLAN #3

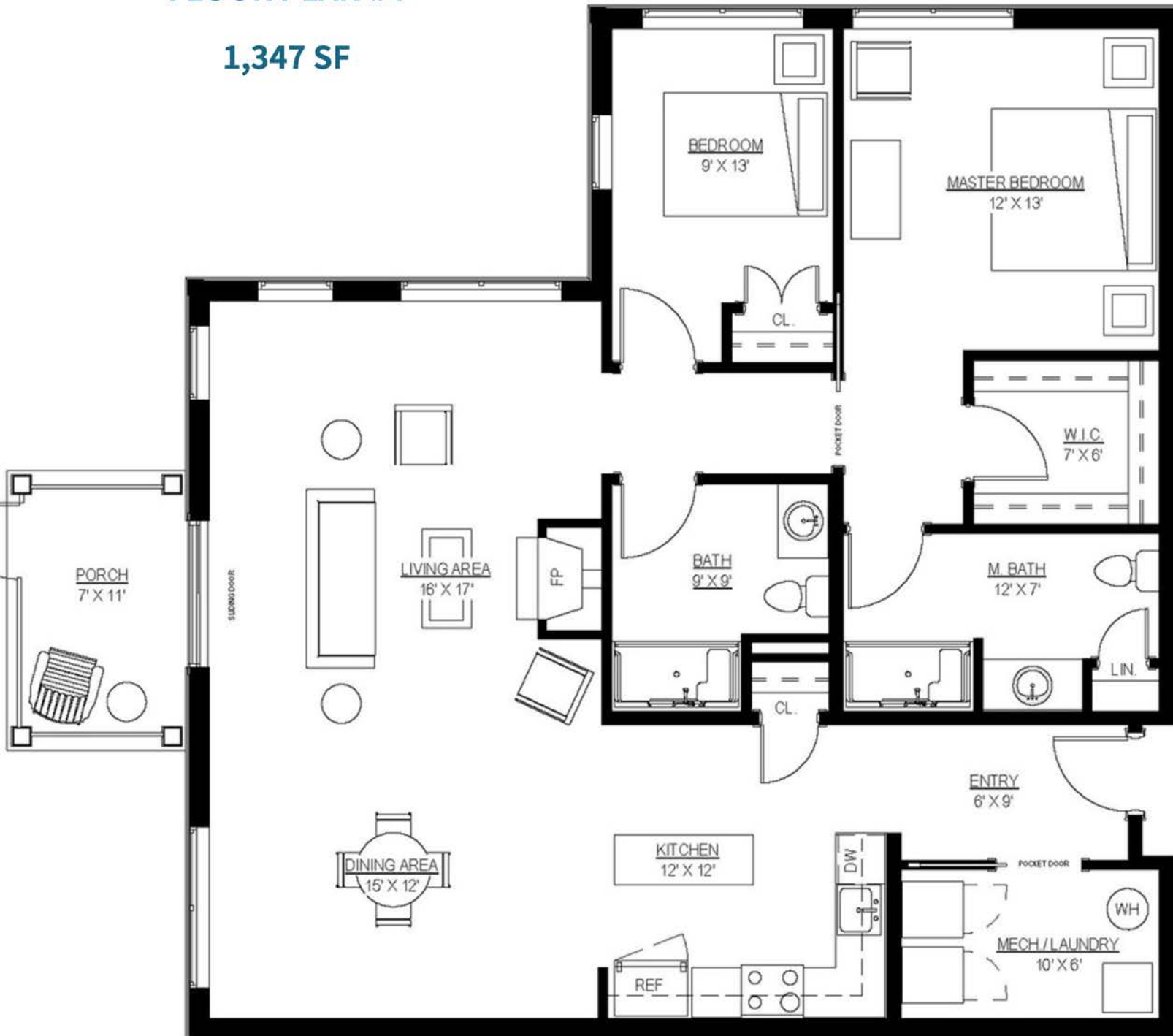
1,243 SF





# APARTMENT FLOOR PLAN #4

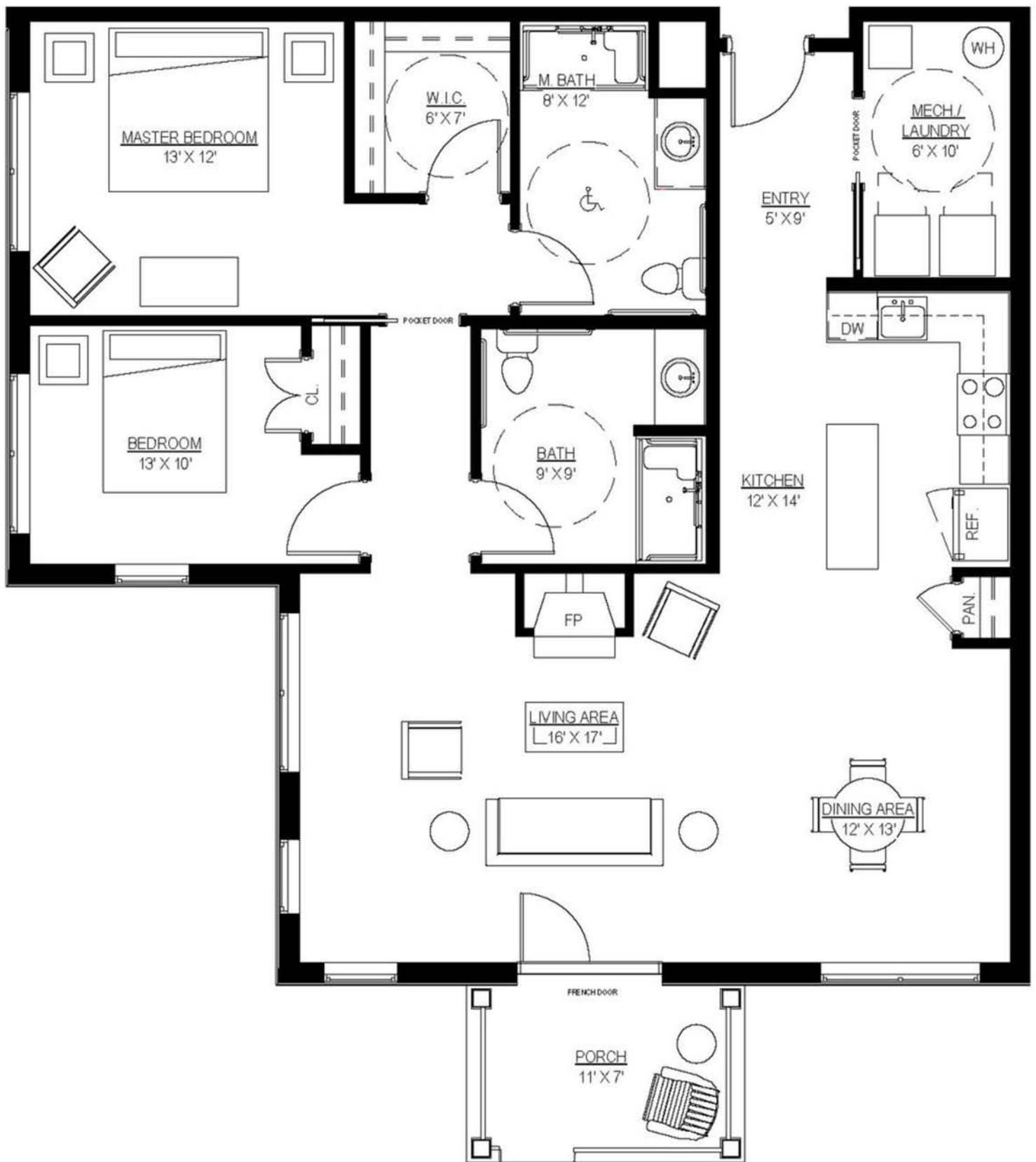
1,347 SF





# APARTMENT FLOOR PLAN #4A (ADA)

1,345 SF



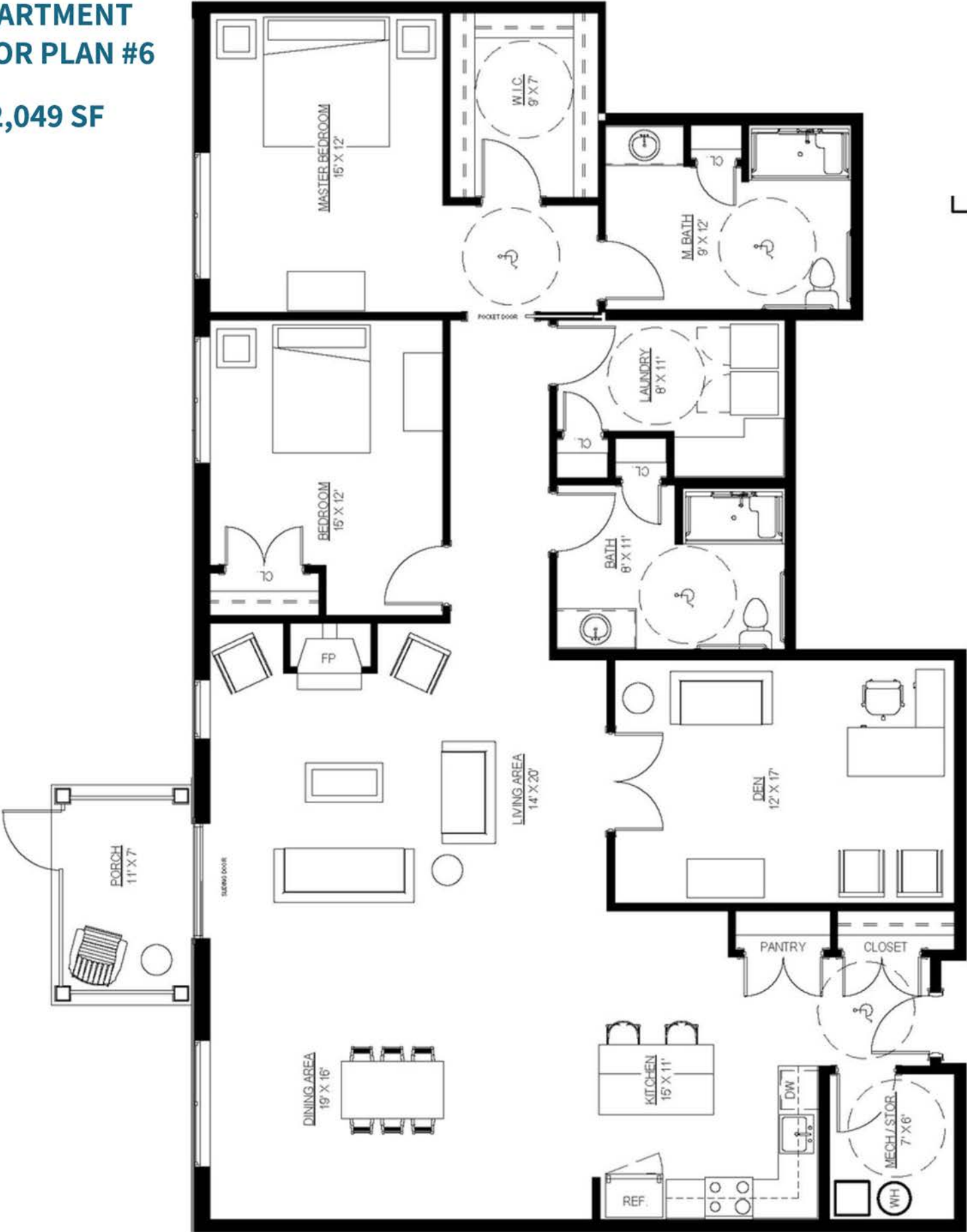
# APARTMENT FLOOR PLAN #5

1,527 SF





APARTMENT  
 FLOOR PLAN #6  
 2,049 SF



# APARTMENT FLOOR PLAN #7

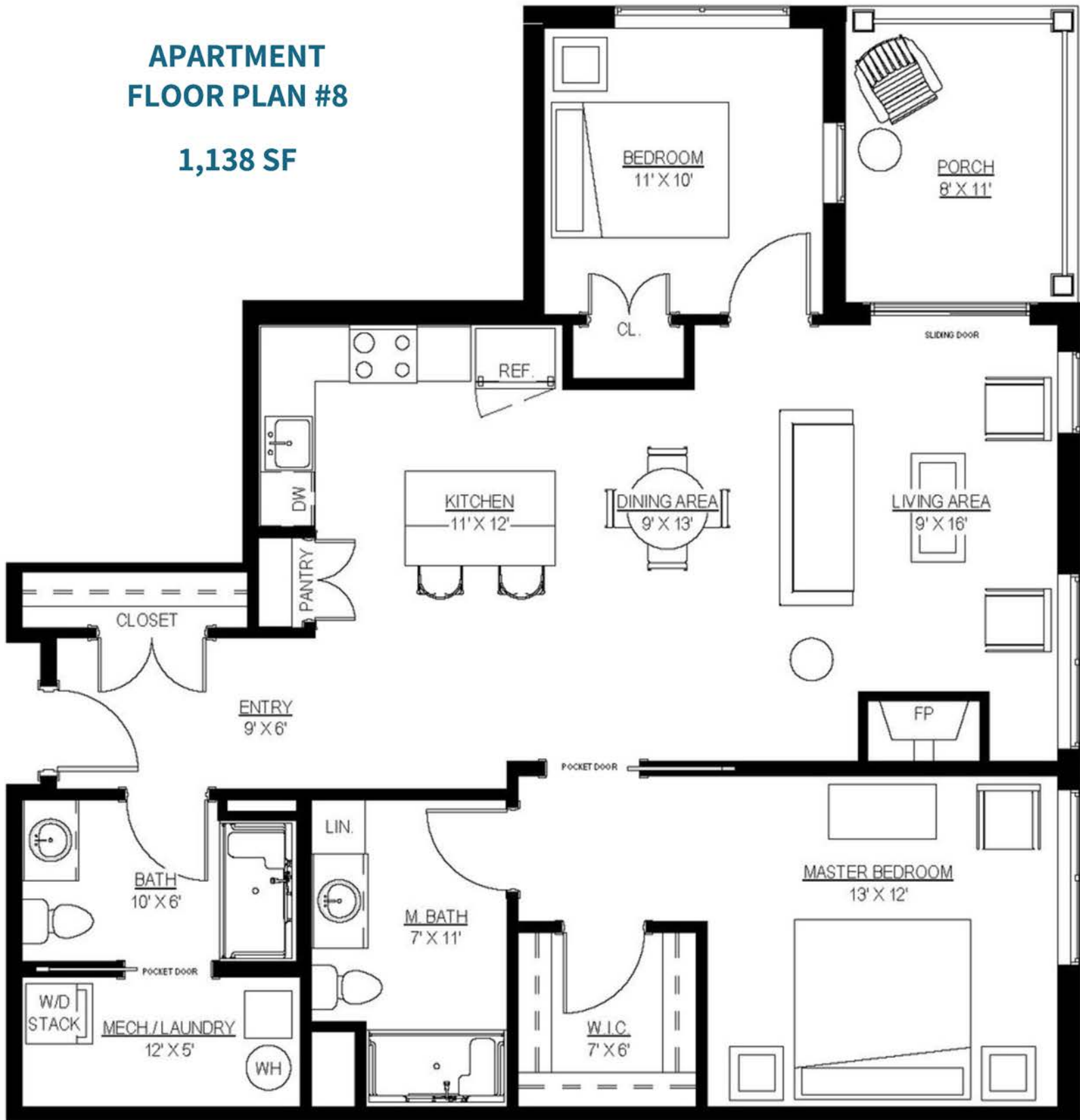
1,227 SF





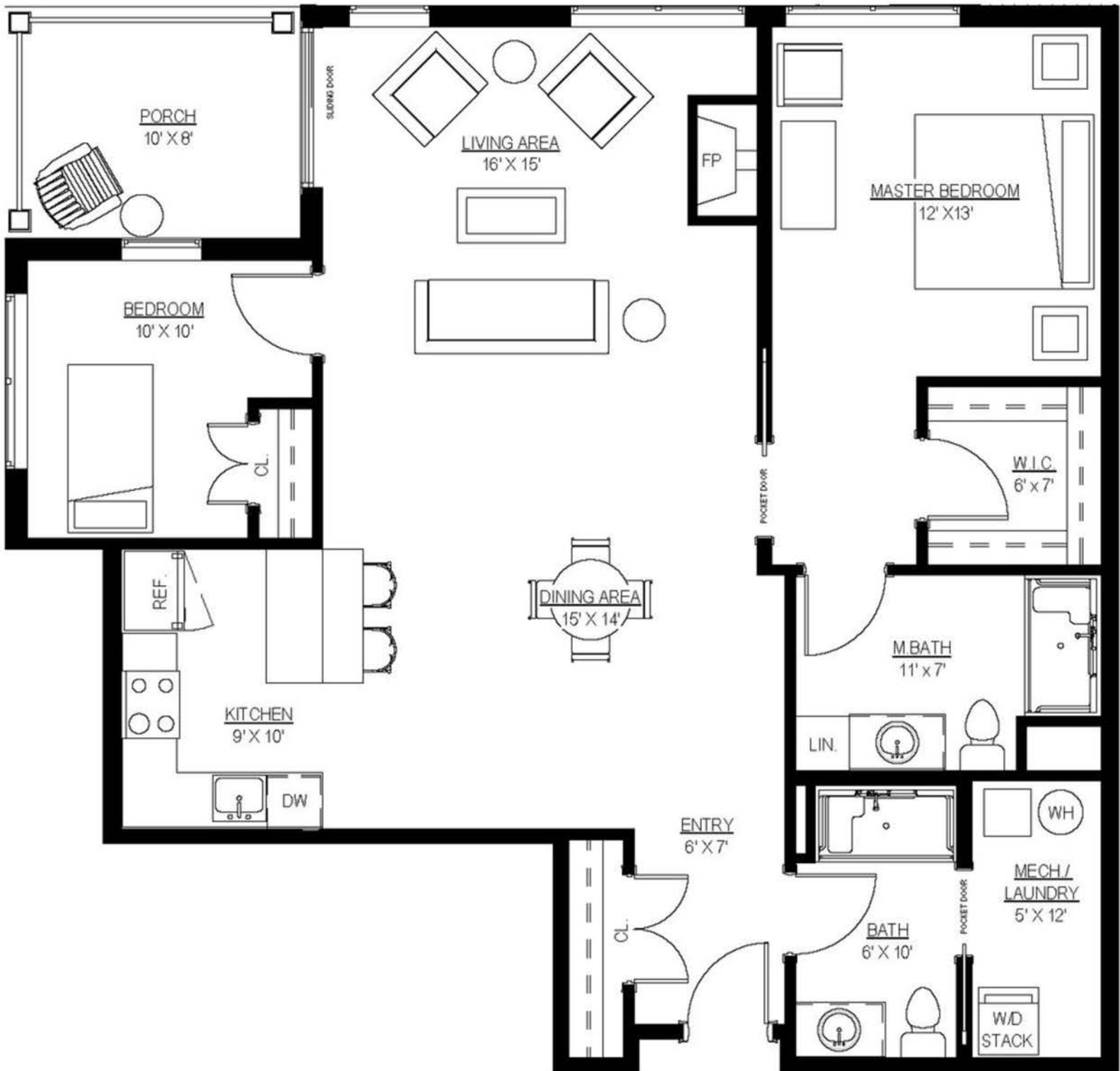
# APARTMENT FLOOR PLAN #8

1,138 SF



# APARTMENT FLOOR PLAN #9

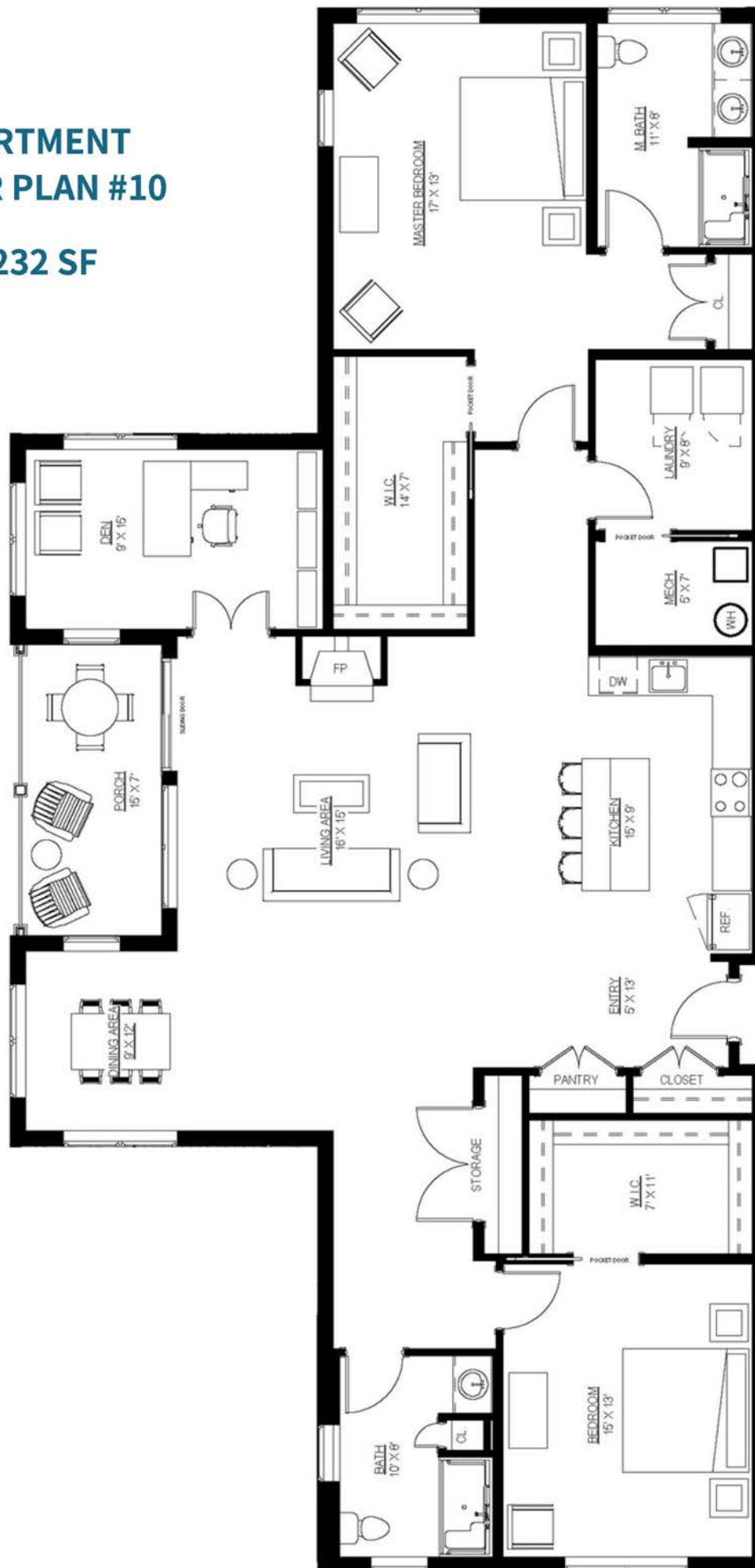
1,217 SF





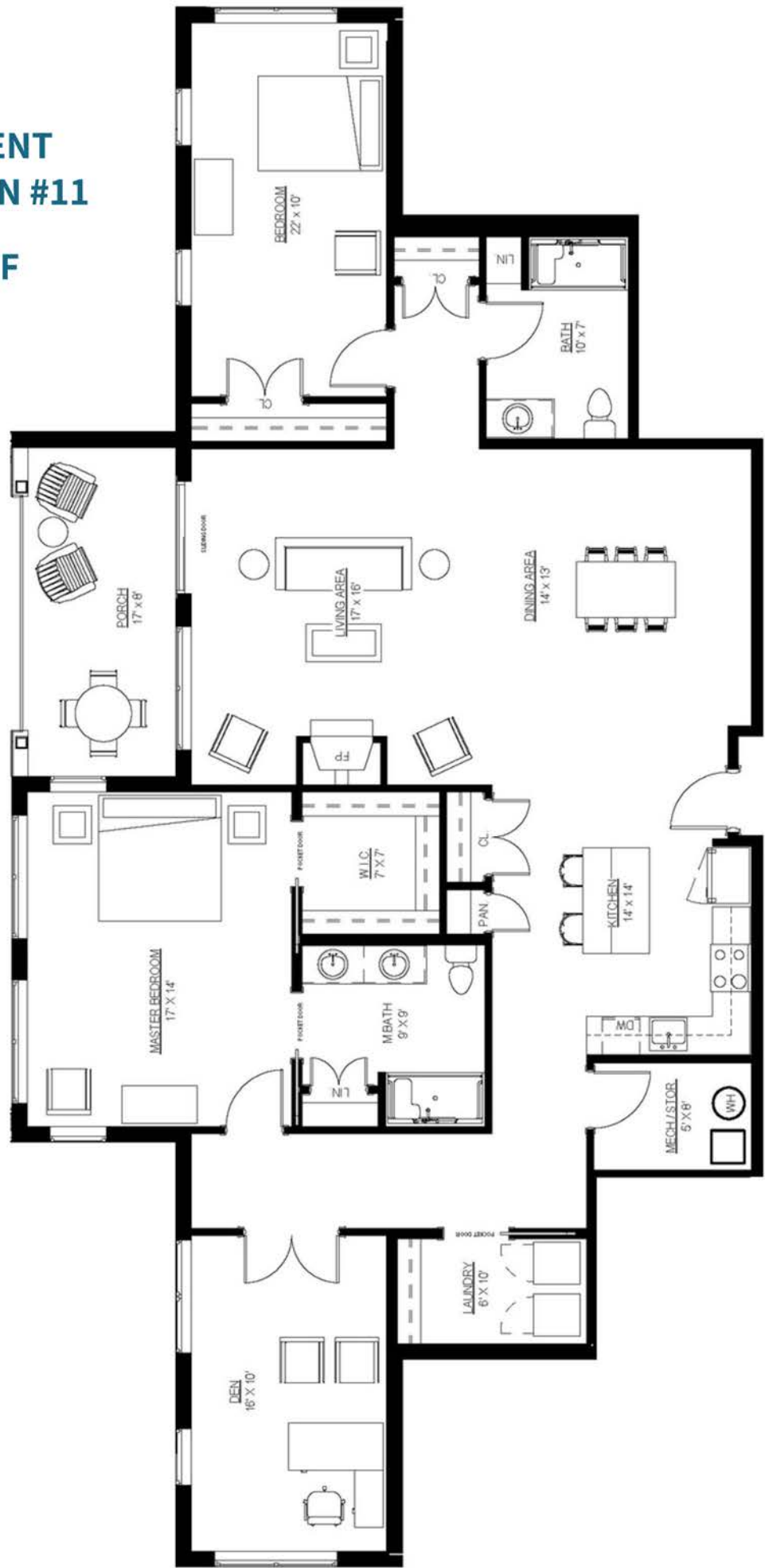
# APARTMENT FLOOR PLAN #10

2,232 SF



APARTMENT  
FLOOR PLAN #11

1,957 SF





# UNIT SELECTION FORM

Name: \_\_\_\_\_

Phone: \_\_\_\_\_

Address: \_\_\_\_\_

Email: \_\_\_\_\_

Unit Selected Below: \_\_\_\_\_

Signature: \_\_\_\_\_

Select a unit **BELOW** with a check mark. Enter unit # and signature **ABOVE**.  
(All unit floor plans can be found in the attached Apartment Marketing Booklet.)

## Building #1

### 1ST FLOOR

☐ Unit 1101  
#4A - 1,345 SF

☐ Unit 1102  
#6 - 2,049 SF

### 3RD FLOOR

☐ Unit 1301  
#4 - 1,347 SF

☐ Unit 1302  
#5 - 1,527 SF

☐ Unit 1303  
#7 - 1,227 SF

☐ Unit 1304  
#8 - 1,138 SF

### 2ND FLOOR

☐ Unit 1201  
#4 - 1,347 SF

☐ Unit 1202  
#5 - 1,527 SF

☐ Unit 1203  
#3 - 1,243 SF

☐ Unit 1204  
#1 - 1,154 SF

### 4TH FLOOR

☐ Unit 1401  
#10 - 2,232 SF

☐ Unit 1402  
#11 - 1,957 SF

## Building #2

### 1ST FLOOR

☐ Unit 2101  
#5 - 1,527 SF

☐ Unit 2102  
#4 - 1,347 SF

☐ Unit 2103  
#1 - 1,154 SF

☐ Unit 2104  
#3 - 1,243 SF

### 3RD FLOOR

☐ Unit 2301  
#5 - 1,527 SF

☐ Unit 2302  
#4 - 1,347 SF

☐ Unit 2303  
#8 - 1,138 SF

☐ Unit 2304  
#7 - 1,227 SF

### 2ND FLOOR

☐ Unit 2201  
#5 - 1,527 SF

☐ Unit 2202  
#4 - 1,347 SF

☐ Unit 2203  
#1 - 1,154 SF

☐ Unit 2204  
#3 - 1,243 SF

### 4TH FLOOR

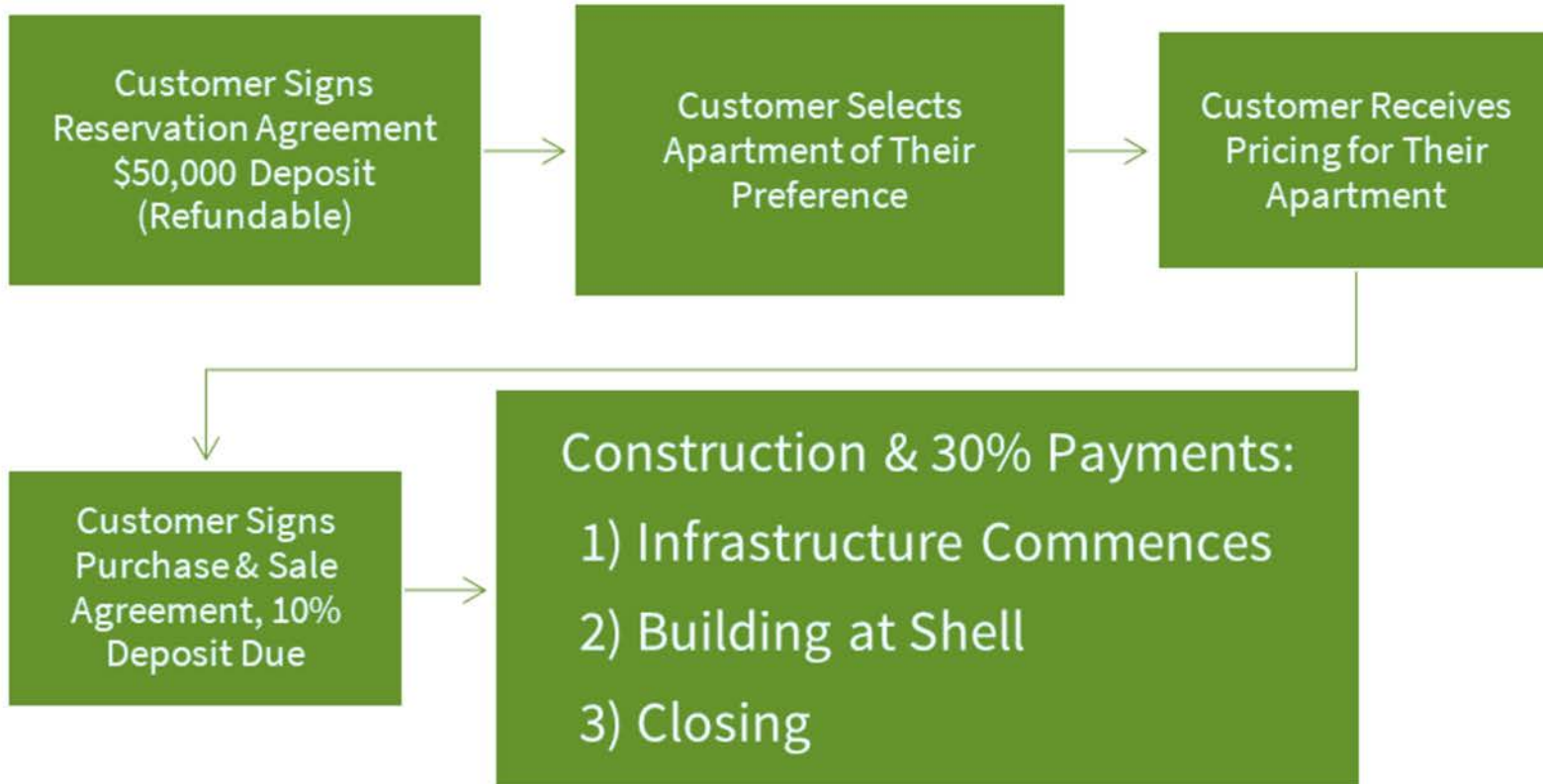
☐ Unit 2401  
#10 - 2,232 SF

☐ Unit 2402  
#11 - 1,957 SF



## NEXT STEPS

### Sales & Construction Process:



#### Questions? Contact Sales & Marketing

Jon Leahy  
Sales Associate &  
Dir. of Marketing & Sales  
(207) 725-4549  
[jleahy@highlandgreenlifestyle.com](mailto:jleahy@highlandgreenlifestyle.com)

Julie Middleton  
Sales Associate  
(207) 725-4549  
[jmiddleton@highlandgreenlifestyle.com](mailto:jmiddleton@highlandgreenlifestyle.com)